



First to Insight. First to Action

ChemAxon UGM 2012, Budapest





## **ANALYTICS & DATA DISCOVERY**

**Visual, Intuitive, &  
Interactive**

**Dynamic, Fast, &  
Easy to Use**

**Ad-hoc Q&A,  
Customizable**

**Empowers All User  
Populations**

## **REPORTING**

Useful, but Limited to  
Static Information

Predetermined  
Questions Only

IT-dependent

## **STATS**

Powerful, but Highly  
Complex

Difficult to Customize

For Advanced Users  
Only

# Spotfire Value Drivers

## Universal Adaptability

Leverage a single analytics and data discovery platform to empower anyone, anywhere to make insightful decisions



## Visibility Into the Unknown

Discover unexpected insights hidden in Big Data and Real-Time Events to immediately identify strategic business opportunities or threats.



## Self-Service Discovery

Freely explore data to any level of detail, radically accelerating decision making, while dramatically reducing dependence on IT



## Fastest to Actionable Insight

Instantly turn insight into action by enabling anyone to rapidly discover hidden insights and quickly collaborate in context



# Spotfire Differentiators



## Dimension-Free Data Exploration



- Visual
- Interactive
- No Constraints



## Data Mashup



- Combine Data Sources
- No Scripting
- IT Free



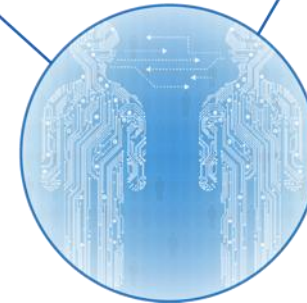
## Predictive & Event Driven



- Data at Rest & In Motion
- Open Source & 3<sup>rd</sup> Party
- “Two Second Advantage”



## Contextual Collaboration



- Bookmarks
- Guided Apps
- Portals & Social Platforms

e

## Enterprise-Class



- Unmatched Performance
- Massive Scalability
- 24x7 Expertise

# TIBCO Spotfire 4.5



## **Spotfire LeadDiscovery 4.0**

ChemAxon support: iJC, Marvin, JChem

## **Statistics 4.5**

Support for: R, S+, SAS, MATLAB

## **Big Data & Unstructured Data**

Hadoop, Teradata, Attivio

# Enterprise Information Architecture

## Contextual Collaboration |



VP R&D



Global Head of Research



Group Leader



Researcher



IT Staff



Statistician



Clinical Data Analyst

## Dimension-Free Data Exploration |

Analytic & Operational Dashboards



Analytic Applications



## Data Mashup |



Enterprise apps



Data warehouse



Excel, Access, SAS, ...



Other sources

Data on Demand

## Predictive & Event driven |



Business Events



Predictive Algorithms

Statistics & Events

## Enterprise-class |



Mission Reliable



Unmatched Performance



Massive Scalability



24x7 Customer Service



Global Domain Expertise



Security



Contact:

Dr Christof Gaenzler

[cgaenzle@tibco.com](mailto:cgaenzle@tibco.com)

